



GMT MONTHLY MEMBERSHIP PROGRESS REPORT

Results as of: 5/31/2020

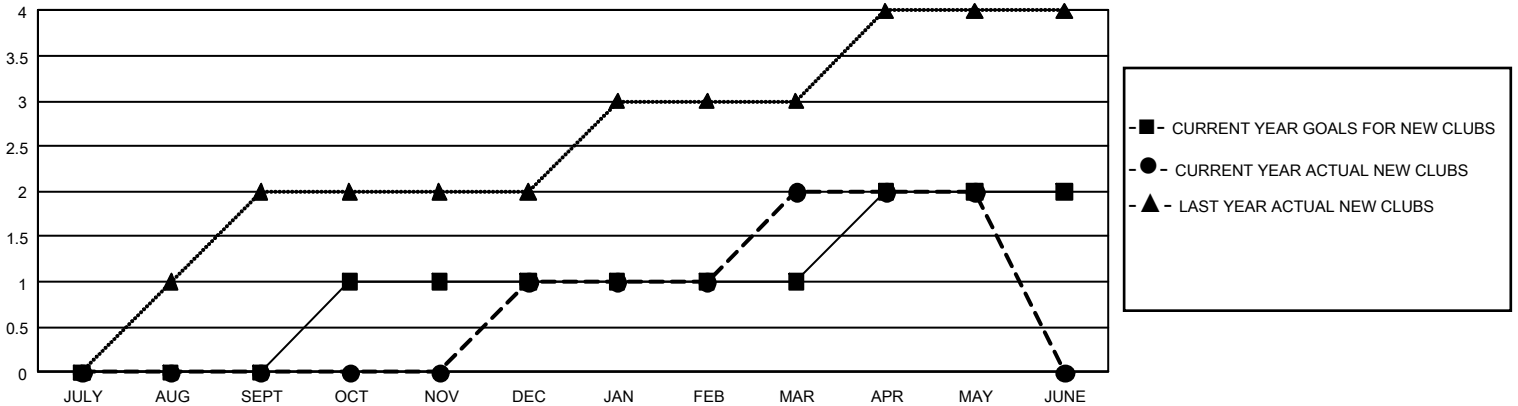
GMT Constitutional Area 4, Group G

GMT: OPEN

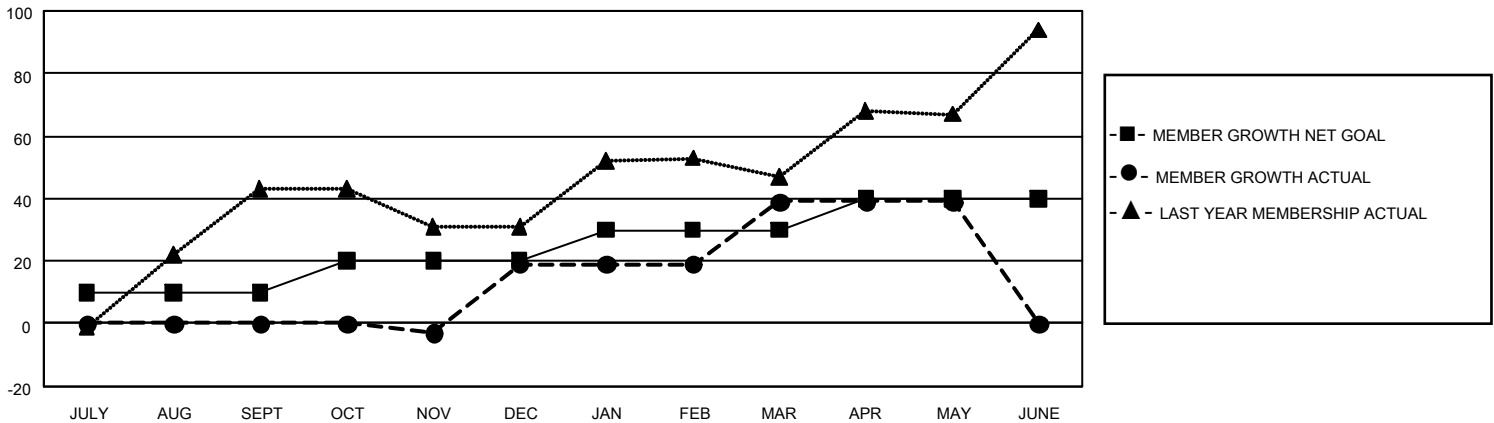
REPORT DOES NOT INCLUDE CLUBS IN UNDISTRICTED AREAS.

Clubs				Members			
RESULTS FOR 2019-2020				RESULTS FOR 2019-2020			
QUARTER	NEW CLUB GOAL	NEW CLUBS	DROPPED CLUBS	QUARTER	MEMBER GROWTH NET GOAL	MEMBER GROWTH ACTUAL	DROPPED MEMBERS ACTUAL (including transfers)
JULY/AUG/SEPT	0	0	0	JULY/AUG/SEPT	30	0	0
OCT/NOV/DEC	3	1	0	OCT/NOV/DEC	30	22	3
JAN/FEB/MAR	0	1	0	JAN/FEB/MAR	30	20	0
APR/MAY/JUNE	3	0	0	APR/MAY/JUNE	30	0	0

GOALS AND ACTUAL NEW CLUBS CUMULATIVE



GOALS AND ACTUAL MEMBERS CUMULATIVE



DROPPED CLUBS: 0	2 CLUBS OF 25 ADDED 1 OR MORE NEW MEMBERS	<u>GENDER DISTRIBUTION</u> MALE 226 (37.92%) FEMALE 370 (62.08%)
<u>DROPPED MEMBERS</u> DECEASED 0 CLUB CANCELLED 0 OTHER 3 <hr style="width: 80%; margin-left: 0;"/> TOTAL 3	CLICK HERE FOR CUMULATIVE MEMBERSHIP DATA	TOTAL FAMILY UNIT MEMBERS 304 FAMILY MEMBERS PAYING HALF DUES 229